



Alutronic
INDUSTRIES

WORLD CLASS LOAD SENSORS

WORLD CLASS LOAD SENSORS

Founded in 2020, we are one of the leading Load Sensor manufacturers with focus on Right technology and high-quality Load Cells.



Name

Designation

Our Corporation is one of the eminent companies highly immersed in wholesaling, supplying, exporting, importing and trading a wide array of Weighing scale & its components , Integrated circuits and many more. Also, their economical pricing structure, timeliness and flexibility makes these services immensely in demand.

In conformism with the principles and evolutions defined by the market, these provided products are enormously praised and applauded due to their effectiveness, fine finish, precised design, robustness, flawless finish and longer service life. We always try our level best to provide cost-effective and top class services and products to our clients. We have acquired a commendable place in the business realm, by delivering hugely reliable, eminent and commended products and services to our clients. Commended for their hassle-free delivery process and on time execution, these are immensely recognized. To offer these products and services, we have appointed a skillfull crew of employees who are highly proficient in this realm. Finishing all their responsibilities in the given frame of time, these have assisted us in catering an inclusive clients' base all over the nation.

A black and white photograph of a CNC machine in operation. A metal block is being machined, with a tool bit visible above it. The machine's complex structure, including various levers and guides, is visible. A red hexagonal overlay is positioned on the left side of the image, containing a quote in white text.

”

Talent wins
games,
but teamwork and
intelligence win
championships

INTRODUCTION

“The Best value comes from the Integrity of Successful & Working Perfectly.



Table of Content

| | | |
|----|----------|----------|
| 01 | ABOUT US | PAGE 1-2 |
| 02 | ABOUT US | PAGE 1-2 |
| 03 | ABOUT US | PAGE 1-2 |
| 04 | ABOUT US | PAGE 1-2 |
| 05 | ABOUT US | PAGE 1-2 |
| 06 | ABOUT US | PAGE 1-2 |
| 07 | ABOUT US | PAGE 1-2 |



ABOUT US

Founded in 2020, we are one of the leading Load Sensor manufacturers with focus on Right technology and high-quality Load Cells. We offer a wide array of Load Cells with complete in-house infrastructure having various capabilities including Aluminum Alloy Load Cells, Alloy Steel Load Cells & Stainless Steel Load Cells to cater different type of industrial & commercial requirements.



Alutronic specializes in helping our customers with prototype requirements to volume productions. We have a strong engineering Team working under the guidance of Mr. Virender Jain & Mr. Sidhant Jindal both having industrial and technical experience of more than 15 years, are eager to share our expertise to ensure the product is optimized for manufacturability and cost.

We have a modern facility with latest machinery like Vertical Milling Centres from Huron-France & Fanuc-Japan (4-axis Machines providing one of the highest accuracy products made in India), in House Nickel Electroless Line (with Atotech Chemistry) etc. with an annual capacity of 3,00,000 Load cells.

OUR MISSION

Alutronic aims at providing world class products to all the customers through strong commitment and customer-centric approach ensuring high quality and reliability, thereby striving to maintain the position at the forefront of latest global technologies.

OUR VISION

To be technologically competent, by partnering with customers in terms of quality, reliability, cost effectiveness and quick delivery. Taking pride in timely Delivery, speedy response & complete customer satisfaction.

QUALITY COMMITMENT

The key factor in our success is HIGH QUALITY PRODUCT. We are committed to maintaining high quality standards during production with reference Standards, so that the quality of the final product is compliant with international standards. This whole process is being handled by an expert quality team.



WIDE RANGE OF CAPABILITIES

Having a wide variety of Load Sensor technologies and material, Alutronic is the one shop solution to all your Load Cell needs.

► RELENTLESS INVESTMENT AN INNOVATION

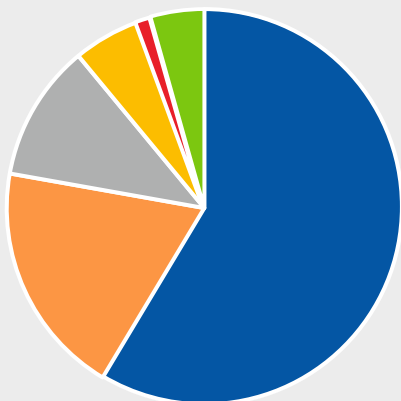
To ensure we offer the best solution to our customer. We constantly invest in state-of-the-art equipment and latest process technologies.

► COMMITMENT TO THE ENVIRONMENT AND CARE FOR OUR CUSTOMERS

Alutronic is dedicated to responsible and sustainable manufacturing, and our goal is to be one of the world leader in Load Cell manufacturing.



SALE % PRODUCT LINES



- Weighing Scale Industry
- Industrial Machinery & Automation
- Automotive
- Railway
- Construction
- Others



EXPERIENCED AND KNOWLEDGEABLE LEADERSHIP

The staff and management team at Alutronic have extensive industry experience and they come from diverse international backgrounds.

SERVICES

Prototype to production, quick term service, All India services, Logistic solutions

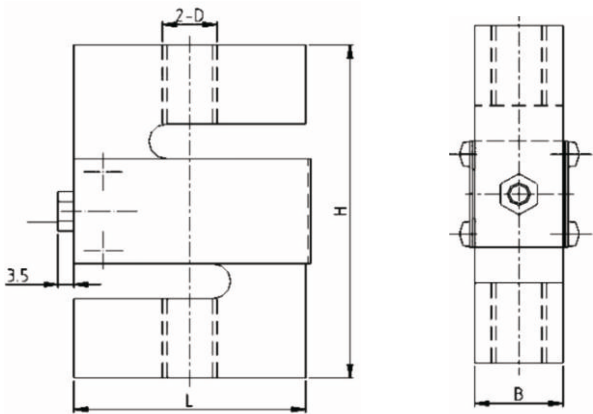
KEY STRENGTH

- Complete In house Designing and Machining with highest accuracy made in India using 4 axis vertical milling centers from Fanuc, Japan.
- Semi automatic plating line with Auotech chemistry.
- Highly Skilled and experienced management and staff.
- keen in new project development.
- Adoption of standard products and engaging in comprehensive procurement on regular basis.
- Huge investment on automation and new technologies.
- Careful attention to the Laws and regulations such as environmental laws including air pollution, water pollution, toxic substances.

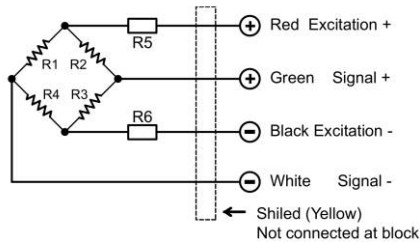
ATI-ST02

S-TYPE LOAD CELL

ATI-ST02 applied to crane scales, batching scale, package scale, electronic machinery scale and special Dynamometry devices



CIRCUIT DIAGRAM



Main Dimensions

| Rated load (t) | D | L | H | B |
|----------------|---------|------|-------|------|
| 100~750 | M10 | 51 | 76.2 | 19.1 |
| 1000 | M12 | 51 | 76.2 | 25.4 |
| 1200~5000 | M20x1.5 | 76.2 | 100.4 | 31.8 |

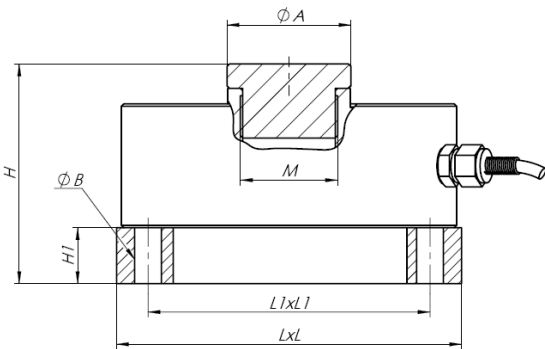
Specification

| | | | |
|-------------------|--------------------------|-----------------------|--------------------------------|
| Rated load (Emax) | 100~1000kg, 1.2~5t | Insulation resistance | ≥ 5000MΩ |
| Sensitivity | 2.0±0.003mV/V | Operating Temp Range | -30(～+70)°C |
| Combined error | ±0.05 % F.S; ±0.03 % F.S | Safe load limit | 120%F.S |
| Creep/30min | ±0.03 % F.S/30min | Ultimate overload | 200%F.S |
| Zero balance | ±1 % F.S | Recommend excitation | 10~12V DC |
| TCO | ±0.02 % F.S/10°C | Max excitation | 15V DC |
| TC SPAN | ±0.02 % F.S/10°C | Protection Class | IP65(100~1000kg); IP68(1.2~5t) |
| Input resistance | 400±20Ω | Material | Alloy steel Stainless steel |
| Output resistance | 352±3Ω | Cable | Length=5m Diameter: Φ5mm |

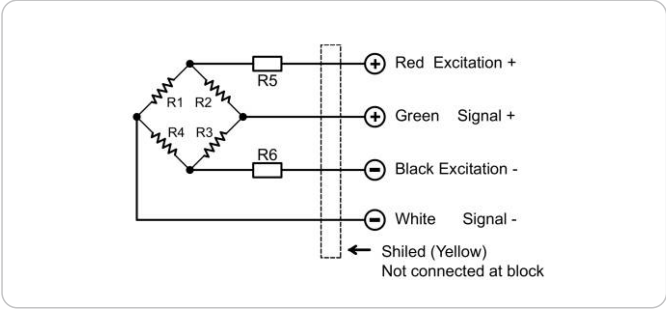
ATI-LF01

LOW PROFILE COMPRESSION LOAD CELL

ATI-LF01 Applied to car weighter, Orbit, Weighter, Batching Weighing



CIRCUIT DIAGRAM



Main Dimensions

| Rated load (t) | H | H1 | ΦA | ΦB | L | L1 | M |
|----------------|------|----|-------|-----|-------|-------|---------|
| 0.5~3 | 62.8 | 18 | Φ32 | Φ11 | 130 | 103.8 | M16×1.5 |
| 5~10 | 84.8 | 23 | Φ42 | Φ11 | 120.7 | 98.8 | M32×1.5 |
| 15~30 | 90.2 | 23 | Φ51 | Φ11 | 142 | 116 | M40×1.5 |
| 40~60 | 102 | 23 | Φ67.5 | Φ13 | 180 | 147.1 | M32×1.5 |

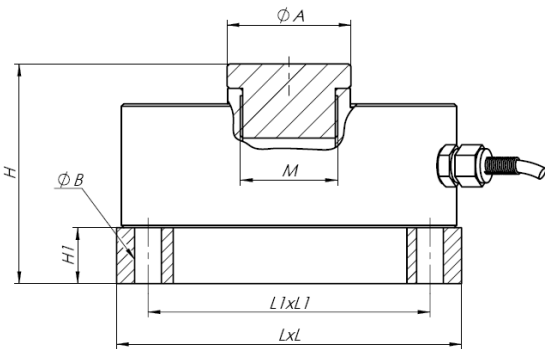
Specification

| | | | |
|--------------------------------|-----------------------------|-----------------------|--------------------------------|
| Rated load (E _{max}) | 10, 20, 25, 30, 40, 50, 60t | Insulation resistance | ≥5000MΩ |
| Sensitivity | 2.0±0.006mV/V | Operating Temp Range | (-30~+70)°C |
| Combined error | ±0.02%F.S; ±0.03 %F.S | Safe load limit | 150%F.S |
| Creep/30min | ±0.02%F.S/30min | Ultimate overloa | 200%F.S |
| Zero balance | ±1%F.S | Recommend excitation | 10~12V DC |
| TCO | ±0.02% F.S/10°C | Max excitation | 15V DC |
| TC SPAN | ±0.02%F.S/10°C | Protection Class | Ip67 |
| Input resistance | 775±10Ω | Material | Alloy steel Stainless steel |
| Output resistance | 702±2Ω | Cable | Length:10m Diameter: Φ6mm |

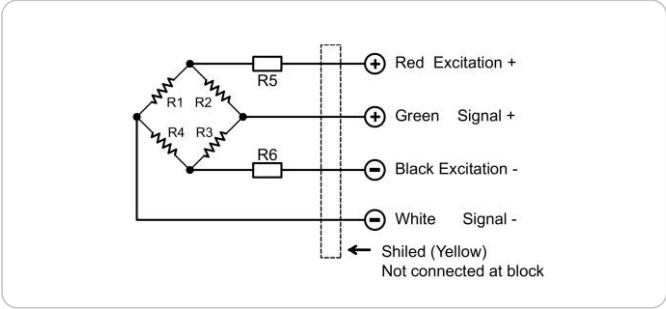
ATI-LF01

LOW PROFILE COMPRESSION LOAD CELL

ATI-LF01 Applied to car weighter, Orbit, Weighter, Batching Weighing



CIRCUIT DIAGRAM



Main Dimensions

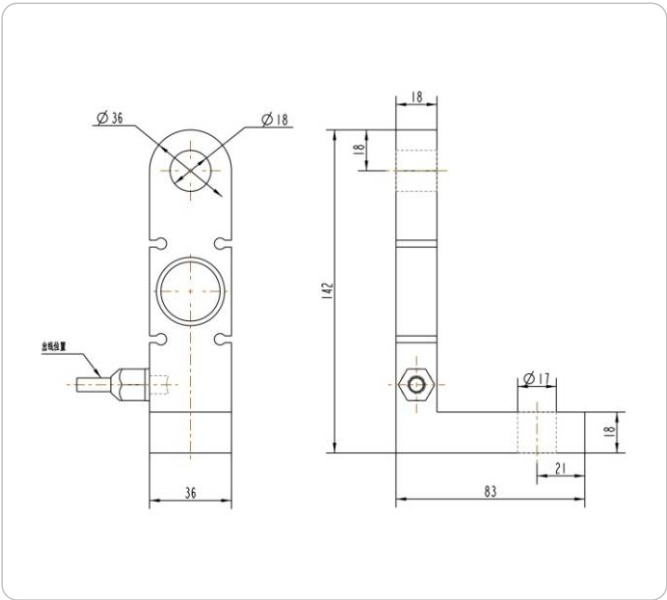
| Rated load (t) | H | H1 | ΦA | ΦB | L | L1 | M |
|----------------|------|----|-------|-----|-------|-------|---------|
| 0.5~3 | 62.8 | 18 | Φ32 | Φ11 | 130 | 103.8 | M16×1.5 |
| 5~10 | 84.8 | 23 | Φ42 | Φ11 | 120.7 | 98.8 | M32×1.5 |
| 15~30 | 90.2 | 23 | Φ51 | Φ11 | 142 | 116 | M40×1.5 |
| 40~60 | 102 | 23 | Φ67.5 | Φ13 | 180 | 147.1 | M32×1.5 |

Specification

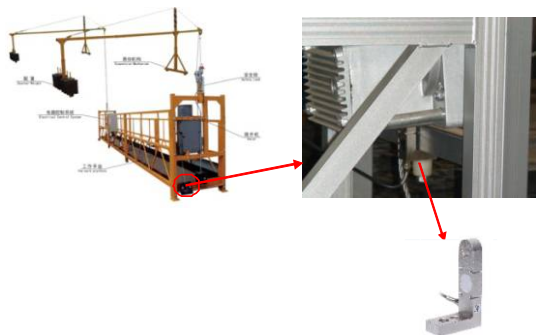
| | | | |
|--------------------------------|-----------------------------|-----------------------|--------------------------------|
| Rated load (E _{max}) | 10, 20, 25, 30, 40, 50, 60t | Insulation resistance | ≥5000MΩ |
| Sensitivity | 2.0±0.006mV/V | Operating Temp Range | (-30~+70)°C |
| Combined error | ±0.02%F.S; ±0.03 %F.S | Safe load limit | 150%F.S |
| Creep/30min | ±0.02%F.S/30min | Ultimate overloa | 200%F.S |
| Zero balance | ±1%F.S | Recommend excitation | 10~12V DC |
| TCO | ±0.02% F.S/10°C | Max excitation | 15V DC |
| TC SPAN | ±0.02%F.S/10°C | Protection Class | Ip67 |
| Input resistance | 775±10Ω | Material | Alloy steel Stainless steel |
| Output resistance | 702±2Ω | Cable | Length:10m Diameter: Φ6mm |

ATI-LT01

CONSTRUCTION BASKET SENSOR CLT01 Applied to construction basket



INSTALLATION EXAMPLE



OPTIONAL INDICATOR

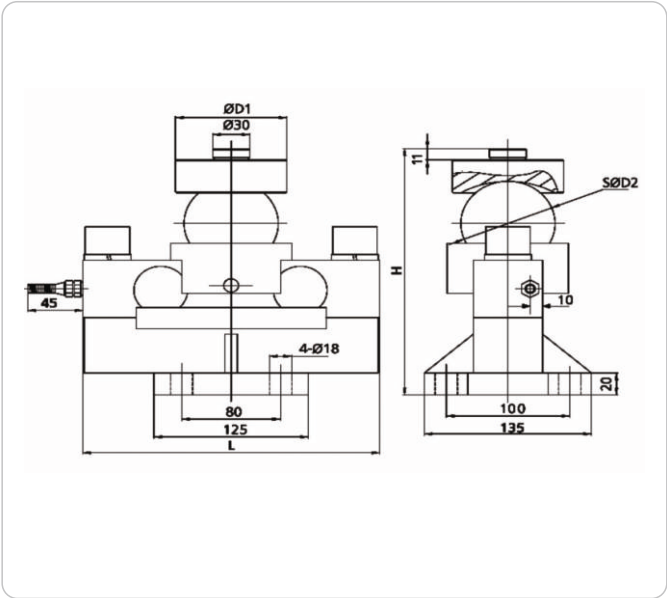


| Specification | | | |
|-------------------|------------------|-----------------------|--------------------------------|
| Rated load (Emax) | 1 t | Insulation resistance | ≥5000MΩ |
| Sensitivity | 1.0±0.002%mV/V | Operating Temp Range | (-30~+70)°C |
| Combined error | ±0.03 % F.S | Safe load limit | 150%F.S |
| Creep/30min | ±0.1 % F.S/30min | Ultimate overload | 200%F.S |
| Zero balance | ±1 % F.S | Recommend excitation | 10~12V(DC or AC) |
| TCO | ±0.02 % F.S/10°C | Max excitation | 15V DC |
| TC SPAN | ±0.02 % F.S/10°C | Protection Class | IP68 |
| Input resistance | 380±10Ω | Material | Alloy steel Stainless steel |
| Output resistance | 350±3Ω | Cable | Length:2.5m Diameter:5mm |

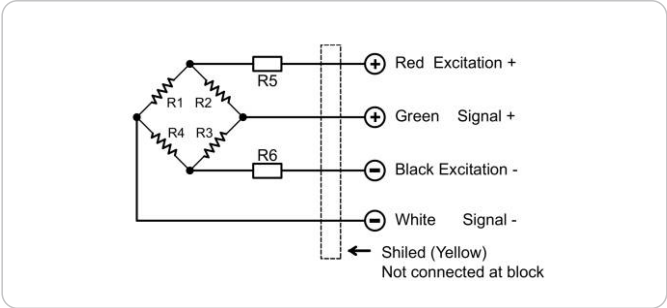
ATI-1010

BEAM WEIGHING SENSOR

hqs02 Applied to truck scales, railway scales, tank scale, all kinds of special weighing instruments



CIRCUIT DIAGRAM



Main Dimensions

| Rated load (t) | D | L | H | B |
|----------------|---------|------|-------|------|
| 100~750 | M10 | 51 | 76.2 | 19.1 |
| 1000 | M12 | 51 | 76.2 | 25.4 |
| 1200~5000 | M20x1.5 | 76.2 | 100.4 | 31.8 |

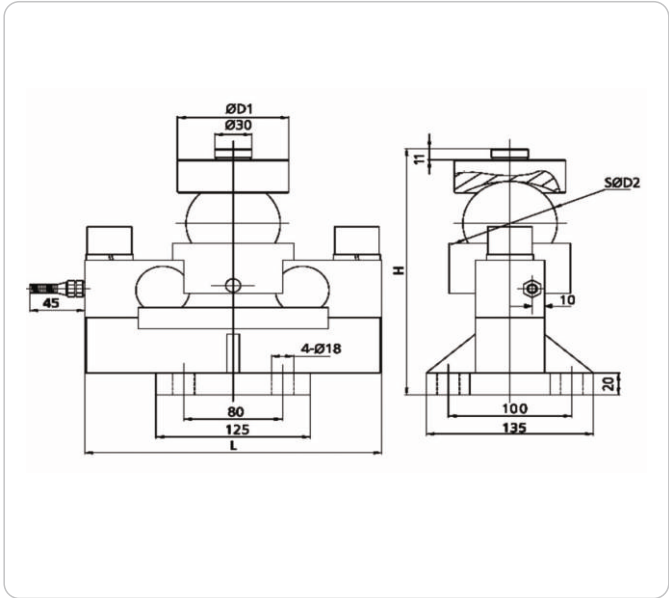
Specification

| | | | |
|-------------------|-------------------|-----------------------|--|
| Rated load (Emax) | 5,10,20,25,30,40t | Insulation resistance | ≥5000MΩ |
| Sensitivity | 2.0±0.002%mV/V | Operating Temp Range | (-30~+70)°C |
| Combined error | ±0.03 % F.S | Safe load limit | 150%F.S |
| Creep/30min | ±0.02 % F.S/30min | Ultimate overload | 200%F.S |
| Zero balance | ±1 % F.S | Recommend excitation | 10~12V(DC or AC) |
| TCO | ±0.02 % F.S/10°C | Max excitation | 15V DC |
| TC SPAN | ±0.02 % F.S/10°C | Protection Class | IP67(5t) , IP68(10~50t) |
| Input resistance | 750±10Ω | Material | Alloy steel Stainless steel |
| Output resistance | 702±3Ω | Cable | Diameter: Φ6mm Length=L:5.2m(5t),8m(10t),10m(15t), 10/15m(20t),12/15m(25t),12/16m(30t) |

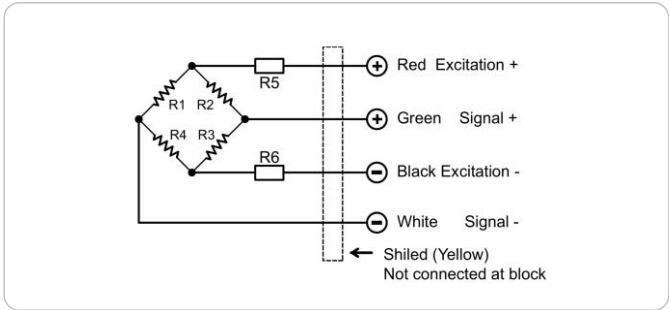
ATI-1020 | ATI-1020D

BEAM WEIGHING SENSOR

hqs02 Applied to truck scales, railway scales, tank scale, all kinds of special weighing instruments



CIRCUIT DIAGRAM



Main Dimensions

| Rated load (t) | D | L | H | B |
|----------------|---------|------|-------|------|
| 100~750 | M10 | 51 | 76.2 | 19.1 |
| 1000 | M12 | 51 | 76.2 | 25.4 |
| 1200~5000 | M20x1.5 | 76.2 | 100.4 | 31.8 |

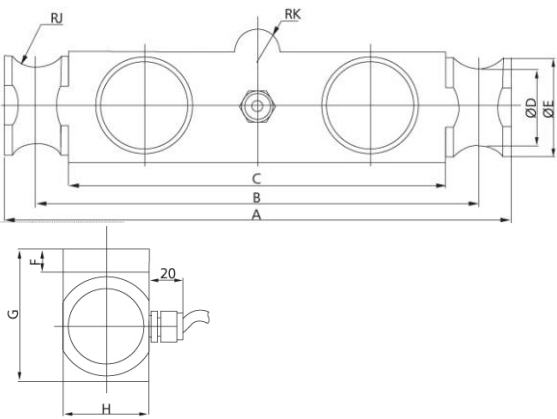
Specification

| | | | |
|-------------------|------------------------|-----------------------|--|
| Rated load (Emax) | 5,10,20,25,30,40t | Insulation resistance | ≥5000MΩ |
| Sensitivity | 2.0±0.002% <i>mV/V</i> | Operating Temp Range | (-30~+70)°C |
| Combined error | ±0.03 % F.S | Safe load limit | 150%F.S |
| Creep/30min | ±0.02 % F.S/30min | Ultimate overload | 200%F.S |
| Zero balance | ±1 % F.S | Recommend excitation | 10~12V(DC or AC) |
| TCO | ±0.02 % F.S/10°C | Max excitation | 15V DC |
| TC SPAN | ±0.02 % F.S/10°C | Protection Class | IP67(5t), IP68(10~50t) |
| Input resistance | 750±10Ω | Material | Alloy steel Stainless steel |
| Output resistance | 702±3Ω | Cable | Diameter: Φ6mm Length=L:5.2m(5t),8m(10t),10m(15t), 10/15m(20t),12/15m(25t),12/16m(30t) |

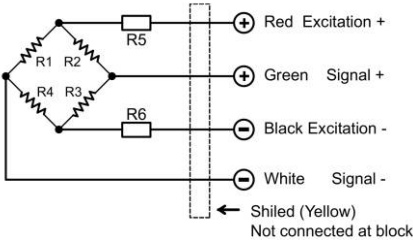
ATI-QS04

BEAM TYPE WEIGHING SENSOR

HQS04 Applied to Truck scales, Railway scales, Axle scale floor scale, Warehouse scale.



CIRCUIT DIAGRAM



Main Dimensions

| Rated load (t) | A | B | C | D | E | F | G | H | J | K |
|----------------|-----|-----|-----|----|----|----|----|----|----|----|
| 25,40,50 | 210 | 185 | 159 | 41 | 51 | 13 | 64 | 51 | 13 | 13 |
| 60,75 | 292 | 254 | 216 | 43 | 56 | 13 | 76 | 51 | 21 | 13 |
| 100,125 | 368 | 317 | 267 | 62 | 81 | 21 | 99 | 74 | 25 | 38 |

Specification

| | | | |
|--------------------------------|-----------------------------|-----------------------|--------------------------------------|
| Rated load (E _{max}) | (25,40,50,60,75,100,125)Klb | Insulation resistance | ≥5000MΩ |
| Sensitivity | 3.0±0.003%mV/V | Operating Temp Range | (-30~+70)°C |
| Combined error | ±0.02 % F.S | Safe load limit | 150%F.S |
| Creep/30min | ±0.02 % F.S/30min | Ultimate overload | 250%F.S |
| Zero balance | ±1 % F.S | Recommend excitation | 10~12V(DC or AC) |
| TCO | ±0.02 % F.S/10°C | Max excitation | 15V DC |
| TC SPAN | ±0.02 % F.S/10°C | Protection Class | IP68 |
| Input resistance | 750±10Ω | Material | 合金钢Alloy steel 不锈钢Stainless steel |
| Output resistance | 703±3Ω | Cable | Length:12m Diameter:Φ6mm |

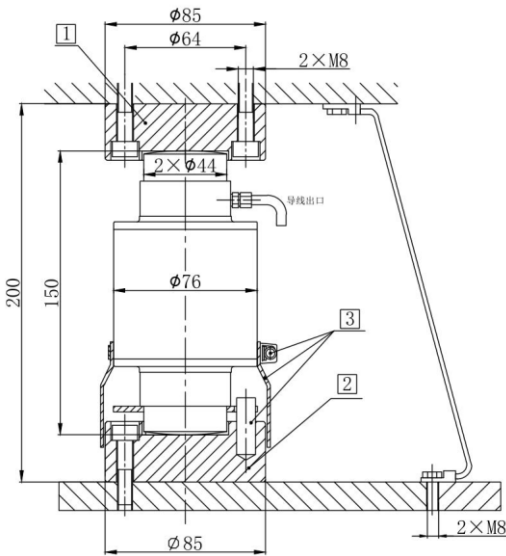
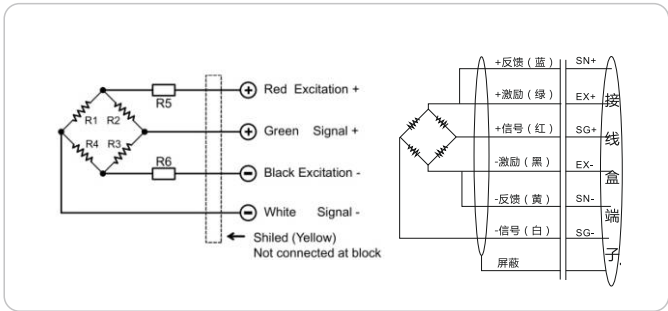
ATI-ZS01

COLUMN LOAD CELL

HZS01 Applied to truck scales, railway scale, Axle scales, ground scales



CIRCUIT DIAGRAM



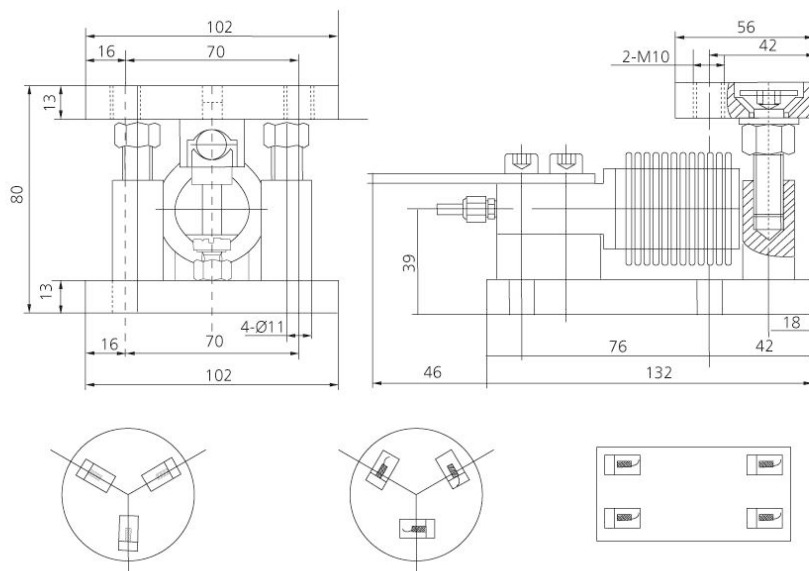
- 1 CTA/ZOU B1
 - 2 CTA/ZOU2 B2
 - 3 Dowel pin 10X30(rotation stop)
- flexible tube and tube clip enclosed in the packing of the load cell

| 主要技术指标 Specification | | | |
|----------------------|-------------------|---|--------------------------------------|
| Rated load (Emax) | 10,20,30,40,50t | 绝缘阻抗Insulation resistance | ≥5000MΩ |
| Sensitivity | 2.0±0.1% mV/V | 工作温度范围Operating Temp Range | (-20~+70)°C |
| Combined error | ±0.015 % F.S | 安全过载 Safe load limit | 150%F.S |
| Creep/30min | ±0.02 % F.S/30min | 极限过载率 Ultimate overload | 200%F.S |
| Zero balance | ±1.0% F.S | 推荐激励电压 Recommend excitation | 5~15V(DC or AC) |
| TCO | ±0.02 % F.S/10°C | 最大激励电压 Maximun excitatong | 15V (DC or AC) |
| TC SPAN | ±0.02 % F.S/10°C | 密封等级 Protection Class | Ip68 |
| Input resistance | 700±10Ω/775±10Ω | 材质 Material | 合金钢Alloy steel 不锈钢Stainless steel |
| Output resistance | 702±2Ω | 电缆 Cable Length=L:8m(10t),10m(15t),12m(20,25t),16m(30t),18m(40t) | Diameter: Φ6mm |

ATI-BW01-M

BELLOWS WEIGHING MODULE

HQS04 Applied to Truck scales, Railway scales, Axle scale floor scale, Warehouse scale.

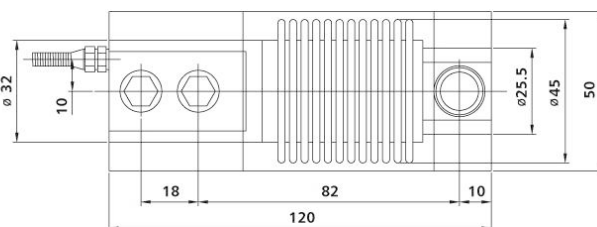
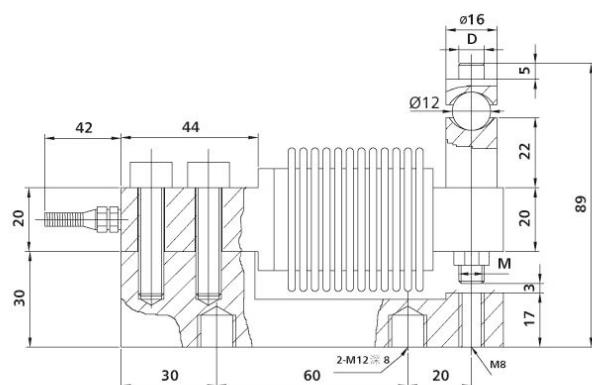


径向安装 Radial Install

切向安装 Cutting Install

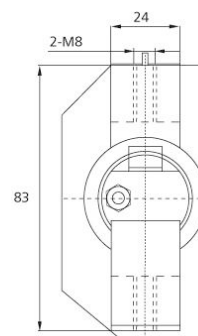
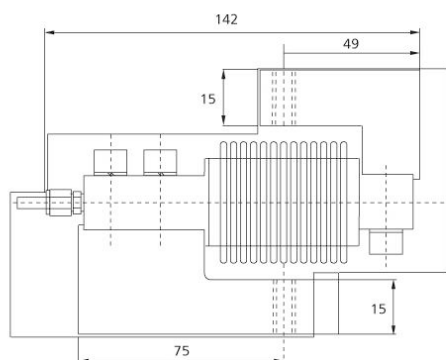
矩形安装 Rectangle Install

HSX-A压式附件结构图



| 额定载荷(t) Rated Load | D | M |
|-----------------------|-----|-----|
| 5,10,20,30,40,50,75 | Φ8 | M8 |
| 100,150,200,250 | Φ10 | M10 |
| 300,500 | Φ10 | M10 |

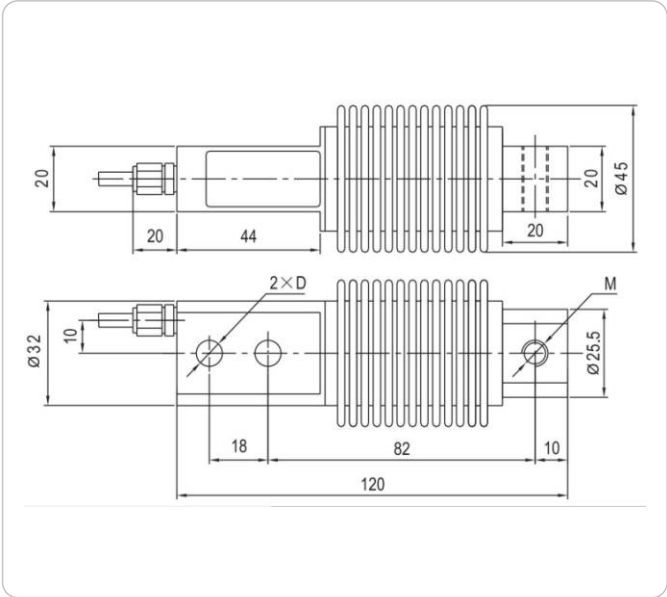
HSX-A拉式附件结构图



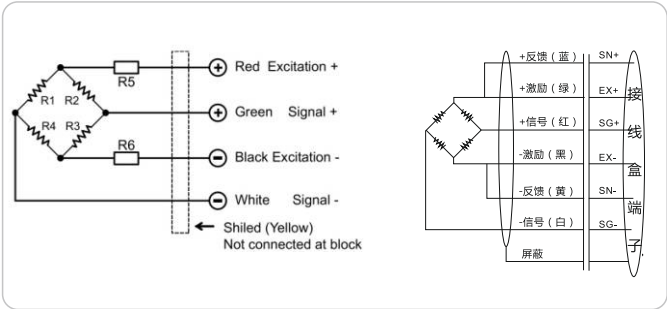
ATI-BW01

BELLOW TYPE

HZS01 Applied to tank scales, belt scales, Batching weighing systems



CIRCUIT DIAGRAM



主要外形尺寸 Main Dimensions

| 额定载荷 (kg) Rated load | D | M |
|---|--------|-----|
| 5, 10, 20, 30, 40, 50, 75, 100, 150, 200, 250 | Φ 8.2 | M8 |
| 300, 500 | Φ 10.2 | M10 |

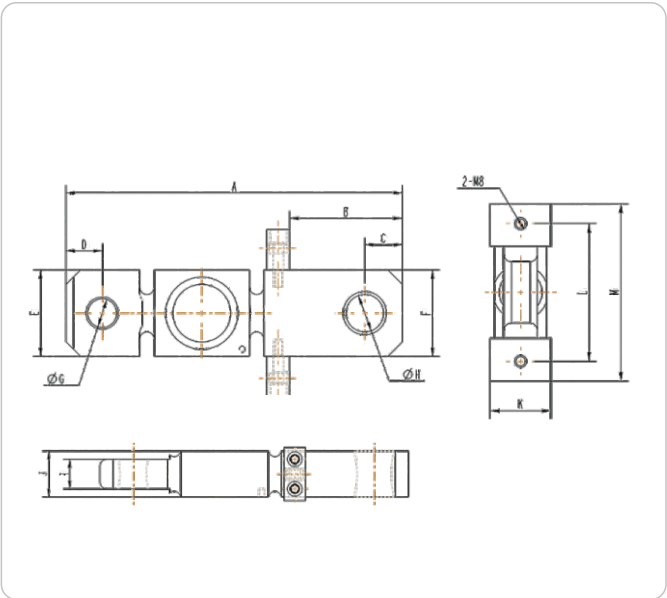
主要技术指标 Specification

| | | | |
|------------------------|---|-----------------------------|--|
| 额定载荷 Rated load (Emax) | 5, 10, 20, 25, 30, 40, 50, 75, 100, 150, 200, 250, 300, 500kg | 绝缘阻抗 Insulation resistance | ≥ 5000MΩ |
| 灵敏度 Sensitivity | 2.0±0.002% mV/V | 工作温度范围 Operating Temp Range | (-30~+70)°C |
| 综合误差 Combined error | ±0.02 % F.S; ±0.03 % F.S | 安全过载 Safe load limit | 150%F.S |
| 蠕变 (30分钟) Creep/30min | ±0.02 % F.S/30min | 极限过载 Ultimate overload | 200%F.S |
| 零点平衡 Zero balance | ±1 % F.S | 推荐激励电压 Recommend excitation | 10~12V(DC or AC) |
| 零点温度影响 TCO | ±0.02 % F.S/10°C | 最大激励电压 Max excitation | 15V DC |
| 输出温度影响 TC SPAN | ±0.02 % F.S/10°C | 密封等级 Protection Class | Ip68 |
| 输入阻抗 Input resistance | 400±10Ω | 材质 Material | 合金钢 Alloy steel 不锈钢 Stainless steel |
| 输出阻抗 Output resistance | 352±2Ω | 电缆 Cable | Length: 3m Diameter: Φ 6mm |

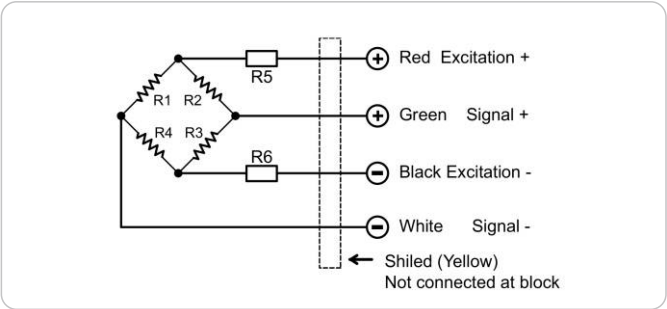
ATI-LN01

BELLOWS WEIGHING MODULE

HLN01 Specialized in crane scale, elastomer using alloy steel entirety with high overloading, high precision, high impact- resistance and other characteristics. Upper and lower ends of the elastomer can be equipped with special rings, hook, Easily assembled crane scale.



CIRCUIT DIAGRAM



主要外形尺寸 Main Dimensions

| 额定载荷 (t) Rated load | A | B | C | D | E | F | G | H | I | J | K | L | M |
|------------------------|-----|----|----|----|----|----|----|----|----|----|----|-----|-----|
| 3 | 233 | 78 | 26 | 25 | 60 | 60 | 20 | 26 | 22 | 34 | 40 | 90 | 116 |
| 5 | 254 | 98 | 30 | 26 | 60 | 60 | 26 | 32 | 33 | 40 | 40 | 90 | 116 |
| 10 | 280 | 34 | 34 | 30 | 80 | 72 | 26 | 38 | 30 | 50 | 40 | 102 | 128 |

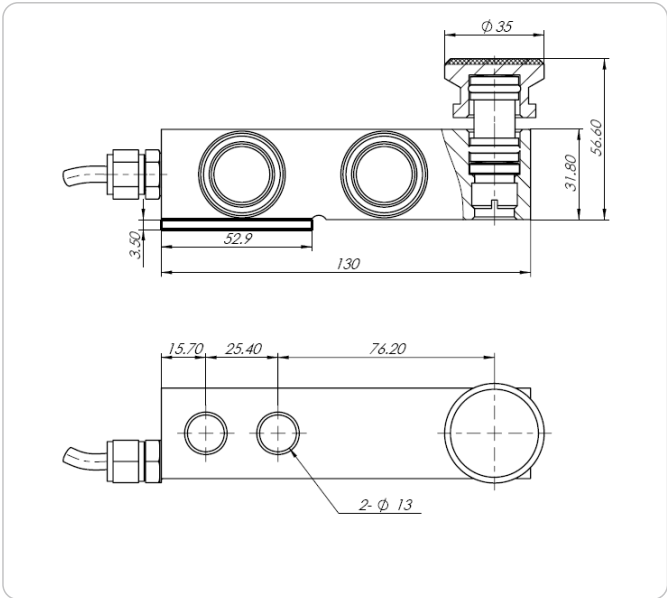
主要技术指标 Specification

| | | | |
|-------------------------------------|-----------------|-----------------------------|--|
| 额定载荷 Rated load (E _{max}) | 3, 5, 10t | 绝缘阻抗 Insulation resistance | ≥5000MΩ |
| 灵敏度 Sensitivity | 2.0±0.006mV/V | 工作温度范围 Operating Temp Range | (-20~+60)°C |
| 综合误差 Combined error | ±0.01%F.S | 安全过载 Safe load limit | 150%F.S |
| 蠕变 (30分钟) Creep/30min | ±0.05%F.S/30min | 极限过载 Ultimate overload | 180%F.S |
| 零点平衡 Zero balance | ±1%F.S | 推荐激励电压 Recommend excitation | 10~12V DC or AC |
| 零点温度影响 TCO | ±0.02% F.S/10°C | 最大激励电压 Max excitation | 15V DC or AC |
| 输出温度影响 TC SPAN | ±0.02%F.S/10°C | 密封等级 Protection Class | IP68 |
| 输入阻抗 Input resistance | 350±5Ω | 材质 Material | 合金钢 Alloy steel 不锈钢 Stainless steel |
| 输出阻抗 Output resistance | 350±5Ω | 连接电缆 Cable | Length:30cm Diameter: Φ6mm |

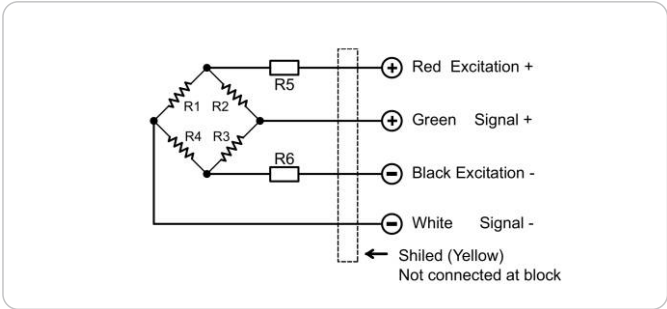
ATI-930

BELLOW TYPE

HSQB01-A Applied to motor vehicles, , ground weighter, single-trackscales, hopper weighing, metering equipment.



CIRCUIT DIAGRAM



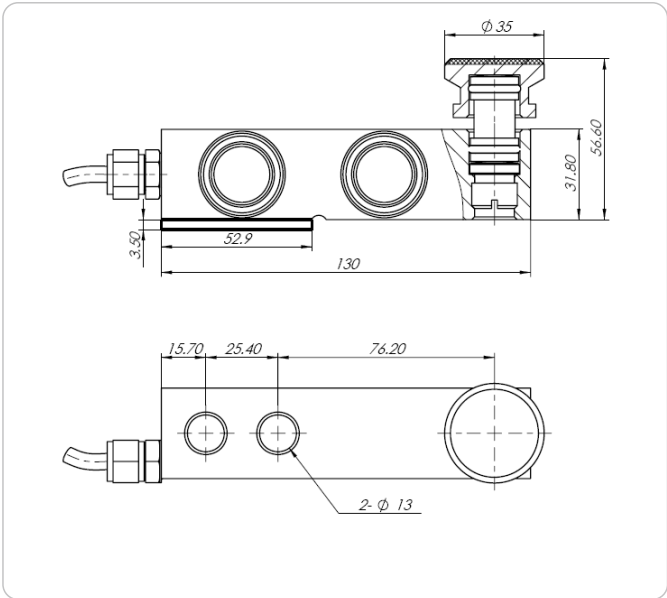
主要技术指标 Specification

| | | | |
|-----------------------|---------------------------|-----------------------------|--------------------------------------|
| 额定载荷Rated load (Emax) | 0.25~2.5t , 3~5t, 7.5~10t | 绝缘阻抗Insulation resistance | ≥ 5000MΩ |
| 灵敏度 Sensitivity | 3.0±0.006mV/V | 工作温度范围Operating Temp Range | (-30~+70)°C |
| 综合误差Combined error | ±0.02%F.S;±0.03 %F.S | 安全过载 Safe load limit | 150%F.S |
| 蠕变 (30分钟) Creep/30min | ±0.02%F.S/30min | 极限过载 Ultimate overload | 180%F.S |
| 零点平衡Zero balance | ±1%F.S | 推荐激励电压 Recommend excitation | 10~12V DC |
| 零点温度影响TCO | ±0.02% F.S/10°C | 最大激励电压 Max excitation | 15V DC |
| 输出温度影响TC SPAN | ±0.02%F.S/10°C | 密封等级 Protection Class | Ip67(0.25~0.75t);IP68(1~10t) |
| 输入阻抗Input resistance | 400±20Ω | 材质 Material | 合金钢Alloy steel 不锈钢Stainless steel |
| 输出阻抗Output resistance | 352±3Ω | 连接电缆 Cable | Length:5m Diameter:Φ 5mm |

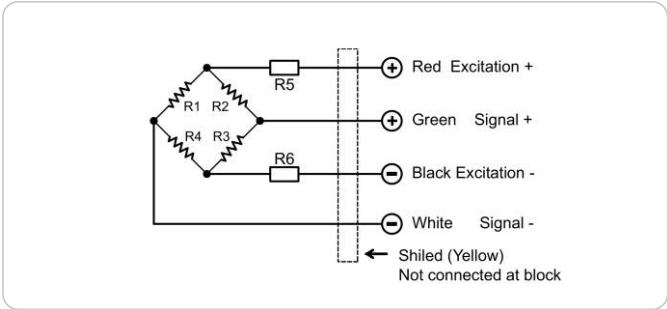
ATI-910 | ATI-920

BELLOW TYPE

HSQB01-A Applied to motor vehicles, , ground weighter, single-trackscales, hopper weighing, metering equipment.



CIRCUIT DIAGRAM

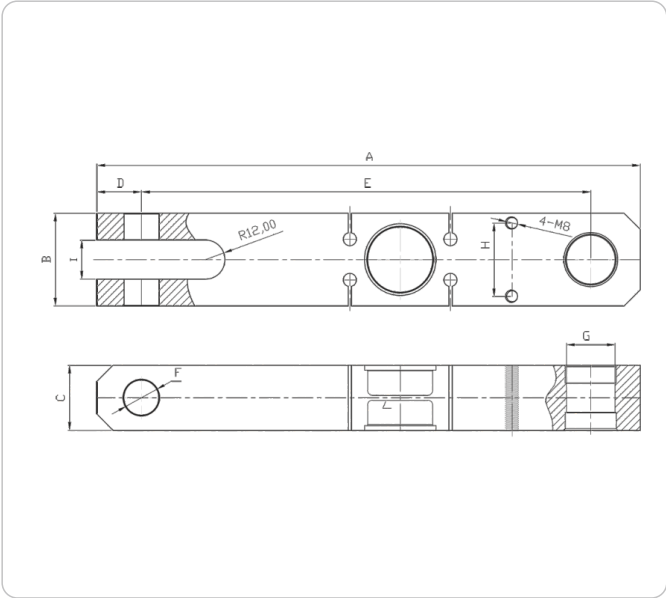


| 主要技术指标 Specification | | | |
|-----------------------|---------------------------|-----------------------------|--------------------------------------|
| 额定载荷Rated load (Emax) | 0.25~2.5t , 3~5t, 7.5~10t | 绝缘阻抗Insulation resistance | ≥ 5000MΩ |
| 灵敏度 Sensitivity | 3.0±0.006mV/V | 工作温度范围Operating Temp Range | (-30~+70)°C |
| 综合误差Combined error | ±0.02%F.S;±0.03 %F.S | 安全过载 Safe load limit | 150%F.S |
| 蠕变 (30分钟) Creep/30min | ±0.02%F.S/30min | 极限过载 Ultimate overload | 180%F.S |
| 零点平衡Zero balance | ±1%F.S | 推荐激励电压 Recommend excitation | 10~12V DC |
| 零点温度影响TCO | ±0.02% F.S/10°C | 最大激励电压 Max excitation | 15V DC |
| 输出温度影响TC SPAN | ±0.02%F.S/10°C | 密封等级 Protection Class | Ip67(0.25~0.75t);IP68(1~10t) |
| 输入阻抗Input resistance | 400±20Ω | 材质 Material | 合金钢Alloy steel 不锈钢Stainless steel |
| 输出阻抗Output resistance | 352±3Ω | 连接电缆 Cable | Length:5m Diameter:Φ 5mm |

ATI-LN03

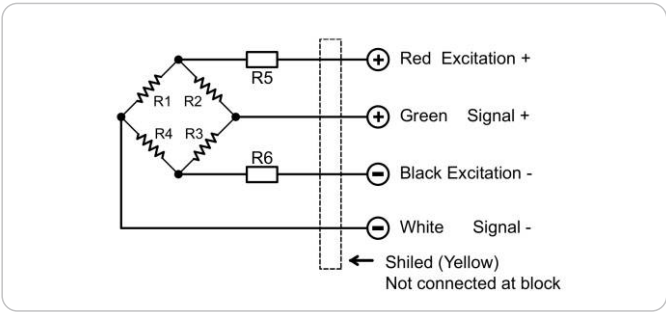
CRANE SCALE LOAD CELL

HLN03 Specialized in crane scale for using alloy steel entirely. Optimized structure design, high precision, small angle for rotation error, suit for manufacturing various high-precision crane scales.



CIRCUIT DIAGRAM

| 主要外形尺寸 Main Dimensions | | | | | | | | | |
|------------------------|-----|----|----|------|-----|------|----|----|----|
| 额定载荷(t) Rated load | A | B | C | D | E | F | G | H | I |
| 3 | 335 | 57 | 40 | 27 | 277 | 21.5 | 30 | 45 | 24 |
| 5 | 362 | 68 | 45 | 28 | 298 | 26 | 35 | 50 | 36 |
| 10 | 384 | 83 | 55 | 34.5 | 307 | 32.4 | 40 | 60 | 32 |

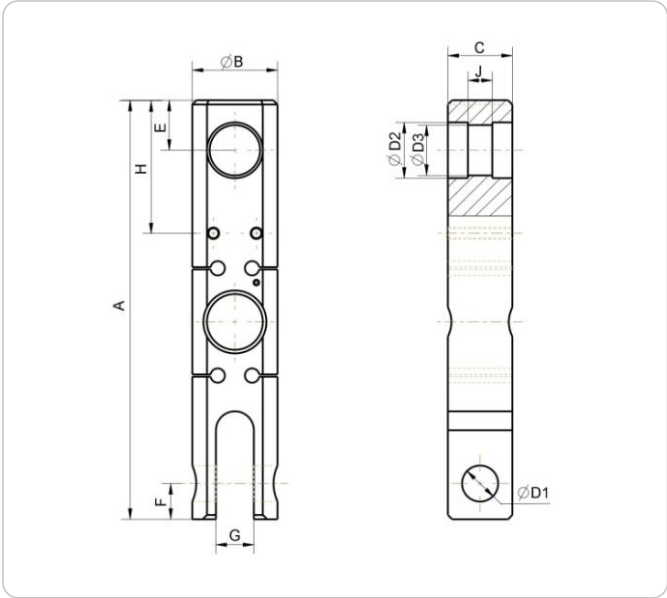


| 主要技术指标 Specification | | | |
|-----------------------|-----------------|-----------------------------|--------------------------------------|
| 额定载荷Rated load (Emax) | 3, 5, 10t | 绝缘阻抗Insulation resistance | ≥5000MΩ |
| 灵敏度 Sensitivity | 2.0±0.006mV/V | 工作温度范围Operating Temp Range | (-20~+60)°C |
| 综合误差Combined error | ±0.01%F.S | 安全过载 Safe load limit | 150%F.S |
| 蠕变 (30分钟) Creep/30min | ±0.05%F.S/30min | 极限过载 Ultimate overload | 180%F.S |
| 零点平衡Zero balance | ±1%F.S | 推荐激励电压 Recommend excitation | 10~12V DC or AC |
| 零点温度影响TCO | ±0.02% F.S/10°C | 最大激励电压 Max excitation | 15V DC or AC |
| 输出温度影响TC SPAN | ±0.02%F.S/10°C | 密封等级 Protection Class | IP68 |
| 输入阻抗Input resistance | 350±5Ω | 材质 Material | 合金钢Alloy steel 不锈钢Stainless steel |
| 输出阻抗Output resistance | 350±5Ω | 连接电缆 Cable | Length:30cm Diameter: Φ6mm |

ATI-LN02

CRANE SCALE LOAD CELL

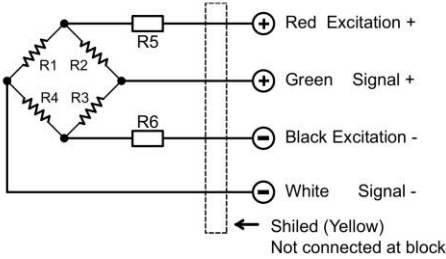
HLN02 Specialized in crane scale, elastomer using alloy steel entirely with high ATI-LN02ding, high precision, high impact-resistance adn other character sti cs. Upper and lower ends of the elastomer can be equipped with special rings, hook, easily assembled crane scale.



CIRCUIT DIAGRAM

主要外形尺寸 Main Dimensions

| 额定载荷(t) Rated load | A | B | C | D1 | D2 | D3 | E | F | G | H | J |
|-----------------------|-----|------|----|------|------|------|------|----|------|------|----|
| 3 | 275 | 55 | 40 | 21.2 | 33 | 30 | 30 | 22 | 24 | 82.5 | 15 |
| 5 | 293 | 59.5 | 45 | 25 | 39 | 35.2 | 35 | 25 | 26.5 | 93 | 17 |
| 10 | 321 | 76 | 55 | 32 | 41.2 | 40 | 40.5 | 32 | 32.4 | 104 | 21 |



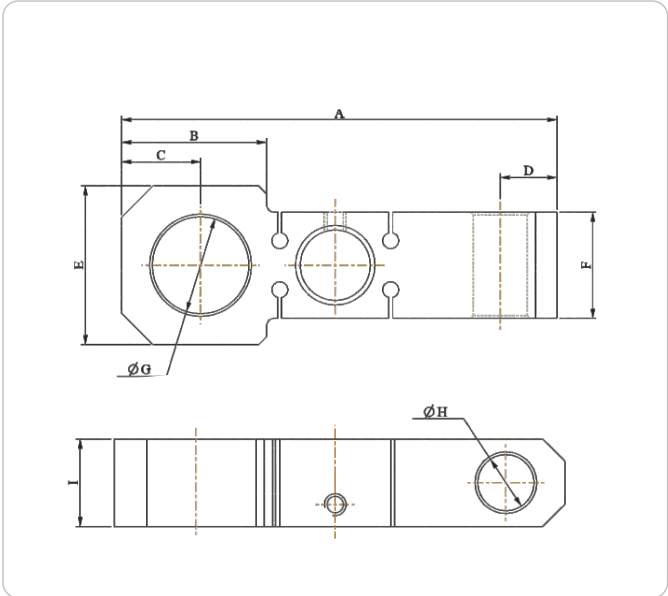
主要技术指标 Specification

| | | | |
|-----------------------|------------------|-----------------------------|--------------------------------------|
| 额定载荷Rated load (Emax) | 3, 5, 10t | 绝缘阻抗Insulation resistance | ≥5000MΩ |
| 灵敏度 Sensitivity | 2.0±0.006mV/V | 工作温度范围Operating Temp Range | (-20~+60)°C |
| 综合误差Combined error | ±0.01%F.S | 安全过载 Safe load limit | 150%F.S |
| 蠕变 (30分钟) Creep/30min | ±0.05%F.S./30min | 极限过载 Ultimate overload | 180%F.S |
| 零点平衡Zero balance | ±1%F.S | 推荐激励电压 Recommend excitation | 10~12V DC or AC |
| 零点温度影响TCO | ±0.02% F.S/10°C | 最大激励电压 Max excitation | 15V DC or AC |
| 输出温度影响TC SPAN | ±0.02%F.S/10°C | 密封等级 Protection Class | IP68 |
| 输入阻抗Input resistance | 350±5Ω | 材质 Material | 合金钢Alloy steel 不锈钢Stainless steel |
| 输出阻抗Output resistance | 350±5Ω | 连接电缆 Cable | Length:30cm Diameter: Φ6mm |

ATI-DL02

DOUBLE BEAM LOAD CELL

ATI-DL02 Applied to all kinds of circle wire rope hoist lift equipment



主要外形尺寸 Main Dimensions

| t | A | B | C | D | E | F | G | H | I |
|---|-----|----|------|------|------|------|------|------|------|
| 1 | 120 | 46 | 24.5 | 14.5 | 46 | 32.2 | 32 | 13 | 30 |
| 2 | 165 | 55 | 30 | 21.5 | 60 | 40 | 36.5 | 20.5 | 32 |
| 3 | 178 | 66 | 32 | 21.5 | 65.5 | 45 | 43.5 | 23.5 | 35.5 |

Installation example



Optional indicator



INP-A

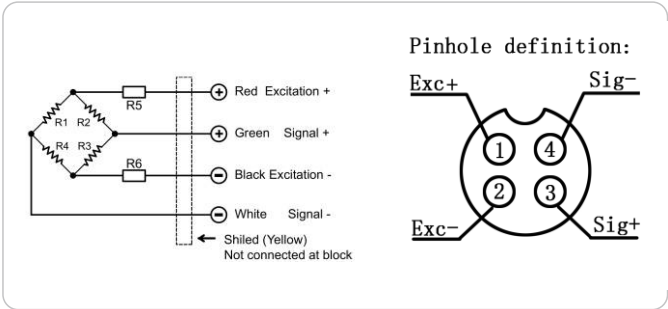


318-A



318-C

CIRCUIT DIAGRAM



主要技术指标 Specification

| | | | |
|-----------------------|------------------------------|-----------------------------|--------------------------------------|
| 额定载荷Rated load (Emax) | 1,2,3 t | 绝缘阻抗Insulation resistance | $\geq 5000M\Omega$ |
| 灵敏度 Sensitivity | $1.0\pm 0.002\%mV/V$ | 工作温度范围Operating Temp Range | $(-30\sim+70)^{\circ}C$ |
| 综合误差Combined error | $\pm 0.03\% F.S$ | 安全过载 Safe load limit | 150%F.S |
| 蠕变 (30分钟) Creep/30min | $\pm 0.1\% F.S/30min$ | 极限过载 Ultimate overload | 200%F.S |
| 零点平衡Zero balance | $\pm 1\% F.S$ | 推荐激励电压 Recommend excitation | 10~12V(DC or AC) |
| 零点温度影响TCO | $\pm 0.02\% F.S/10^{\circ}C$ | 最大激励电压 Max excitation | 15V DC |
| 输出温度影响TC SPAN | $\pm 0.02\% F.S/10^{\circ}C$ | 密封等级 Protection Class | IP68 |
| 输入阻抗Input resistance | $380\pm 10\Omega$ | 材质 Material | 合金钢Alloy steel 不锈钢Stainless steel |
| 输出阻抗Output resistance | $350\pm 3\Omega$ | 电缆 Cable | Length:2.5m Diameter:5mm |



Lorem Ipsum is simply dummy text of the printing and typesetting industry. Lorem Ipsum has been the industry's standard dummy text ever since the 1500s, when an unknown printer took a galley of type and scrambled it to make a type specimen book.

GET IN TOUCH

 +91 9816 770 300, +91 9816 880 300

 alutronicindustries@gmail.com

 Plot no. 61A, Phase 1, Jharmajri Baddi, Distt. Solan,
Himachal Pradesh (INDIA) - 174103

Alutronic
INDUSTRIES

WORLD CLASS LOAD SENSORS